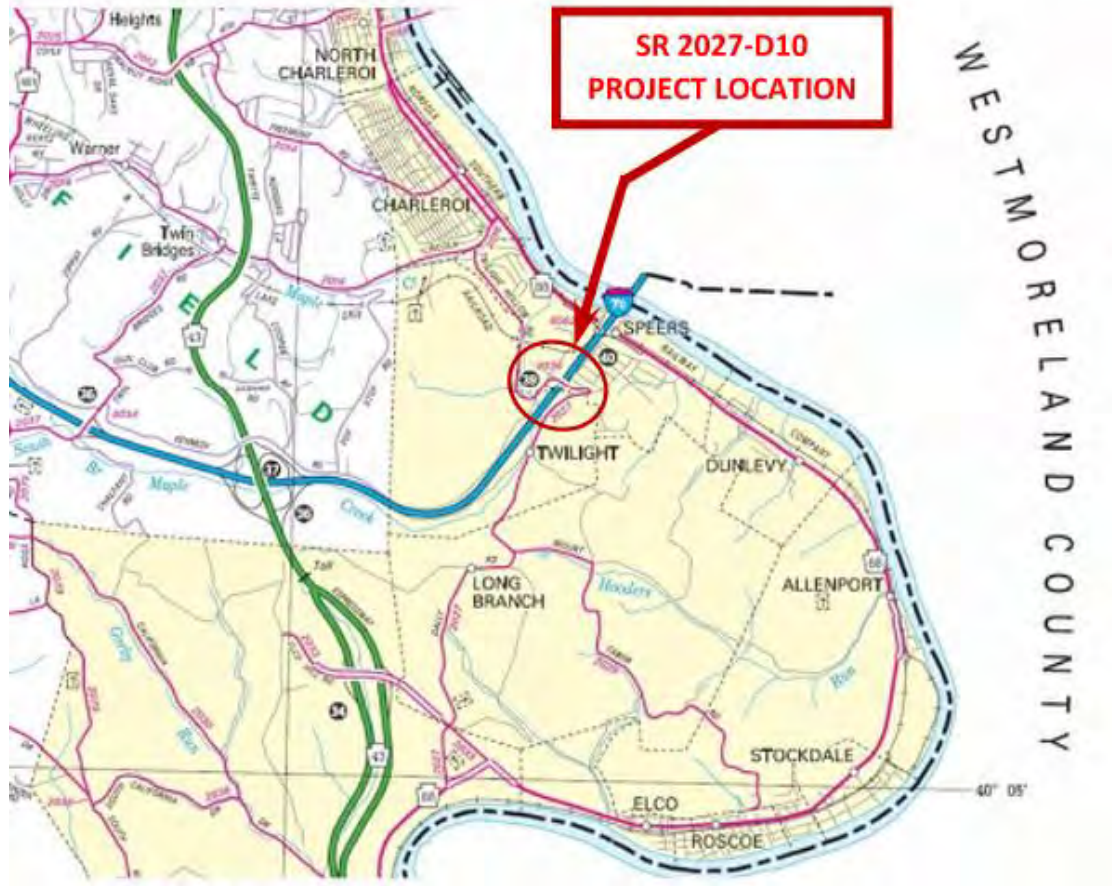


VIRTUAL PUBLIC MEETING
FOR
SR 2027 D10 (MAPLE DRIVE)
BRIDGE REPLACEMENT AT SPEERS
INTERCHANGE

SPEERS BOROUGH
WASHINGTON COUNTY, PENNSYLVANIA

PROJECT INTRODUCTION



Quick Facts:

- ❖ Project Purpose:
 - ❖ Replace the existing structurally deficient bridge, while adding a left turn lane to SR 2027 SB for access to the I-70 EB on-ramp.
 - ❖ Improve the bridge under clearance over I-70 from the existing 14.3 feet to a minimum 16.5 feet.
- ❖ Construction Cost:
 - ❖ \$5.6 Million
- ❖ Construction: March 2022 – November 2022
- ❖ Traffic Control During Construction
 - ❖ SR 2027 Southbound towards California will be maintained.
 - ❖ SR 2027 Northbound will be detoured to I-70 and the SR 88 Interchange.

PROJECT INFORMATION

Proposed Bridge:

- ❖ A Single Span (111 ft.) that will accommodate any future reconstruction of I-70.
- ❖ The new bridge will be wider to provide a southbound left turn lane to the eastbound I-70 on ramp (52' wide vs. 40' existing).
- ❖ The new bridge will not have any piers adjacent to the travel lanes on I-70.
- ❖ Due to construction, the existing Borough of Charleroi waterline is being relocated under I-70.

Traffic Control:



- ❖ Bridge will be built in two stages.
- ❖ One lane of traffic will be maintained for southbound vehicles.
- ❖ Northbound vehicles will detour to the I-70/SR 88 (Charleroi) Interchange.
- ❖ Four night closures of I-70 between 8 PM and 6 AM will be needed to demolish the existing bridge and erect new beams.
- ❖ One weekend closure (Friday evening to Monday morning) of the interchange will be required to improve the SR 2027 and I-70 Eastbound ramps intersection.

PROJECT PHOTOS

SR 2027 (Maple Drive)



SR 2027 D10 Bridge
Looking West along I-70

PROJECT PHOTOS (cont.)

SR 2027 (Maple Drive)



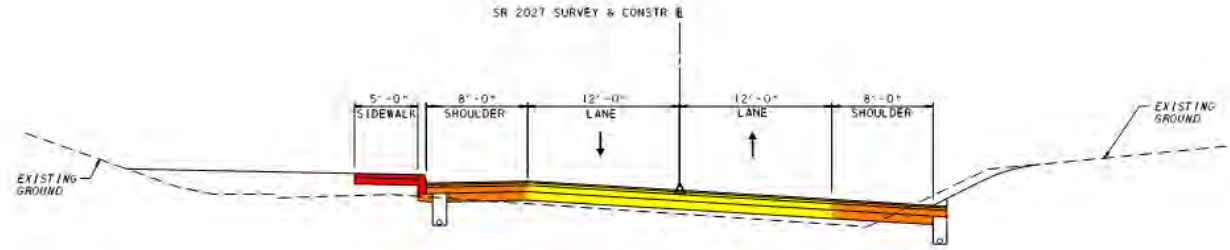
SR 2027 (Maple Drive)
Looking Northbound

PROPOSED TYPICAL SECTIONS

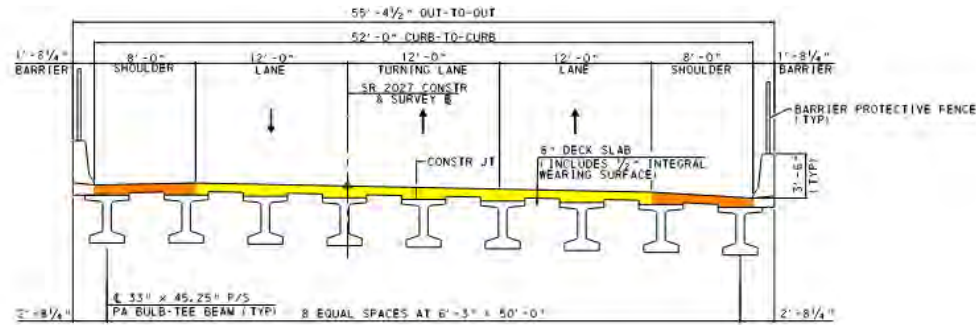
SR 2027 (MAPLE DRIVE)

(SHEET 1 OF 1)

SR 2027 OVER INTERSTATE 70 ROADWAY CONSTRUCTION AND BRIDGE REPLACEMENT TYPICAL ROADWAY SECTION / TYPICAL BRIDGE SECTION



TYPICAL ROADWAY SECTION (2 LANE) - SR 2027



TYPICAL BRIDGE SECTION (3 LANE) - SR 2027

LEGEND

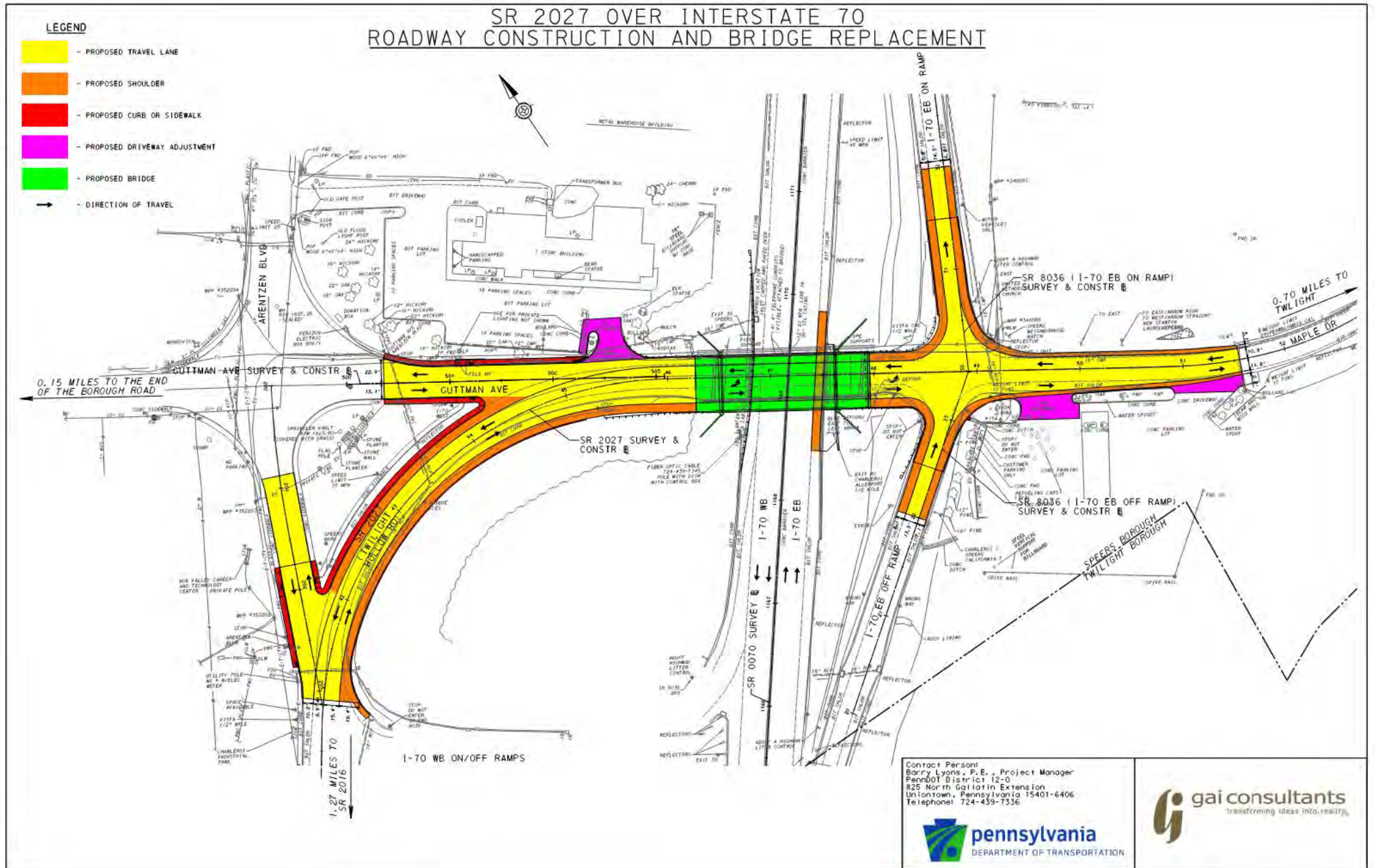
- PROPOSED TRAVEL LANE
- PROPOSED SHOULDER
- PROPOSED CURB OR SIDEWALK
- DIRECTION OF TRAVEL

Contact Person: Barry Lyons, P.E., Project Manager
 PennDOT District 12-0
 835 North Gallatin Extension
 Uniontown, Pennsylvania 15401-6406
 Telephone: 724-439-7336



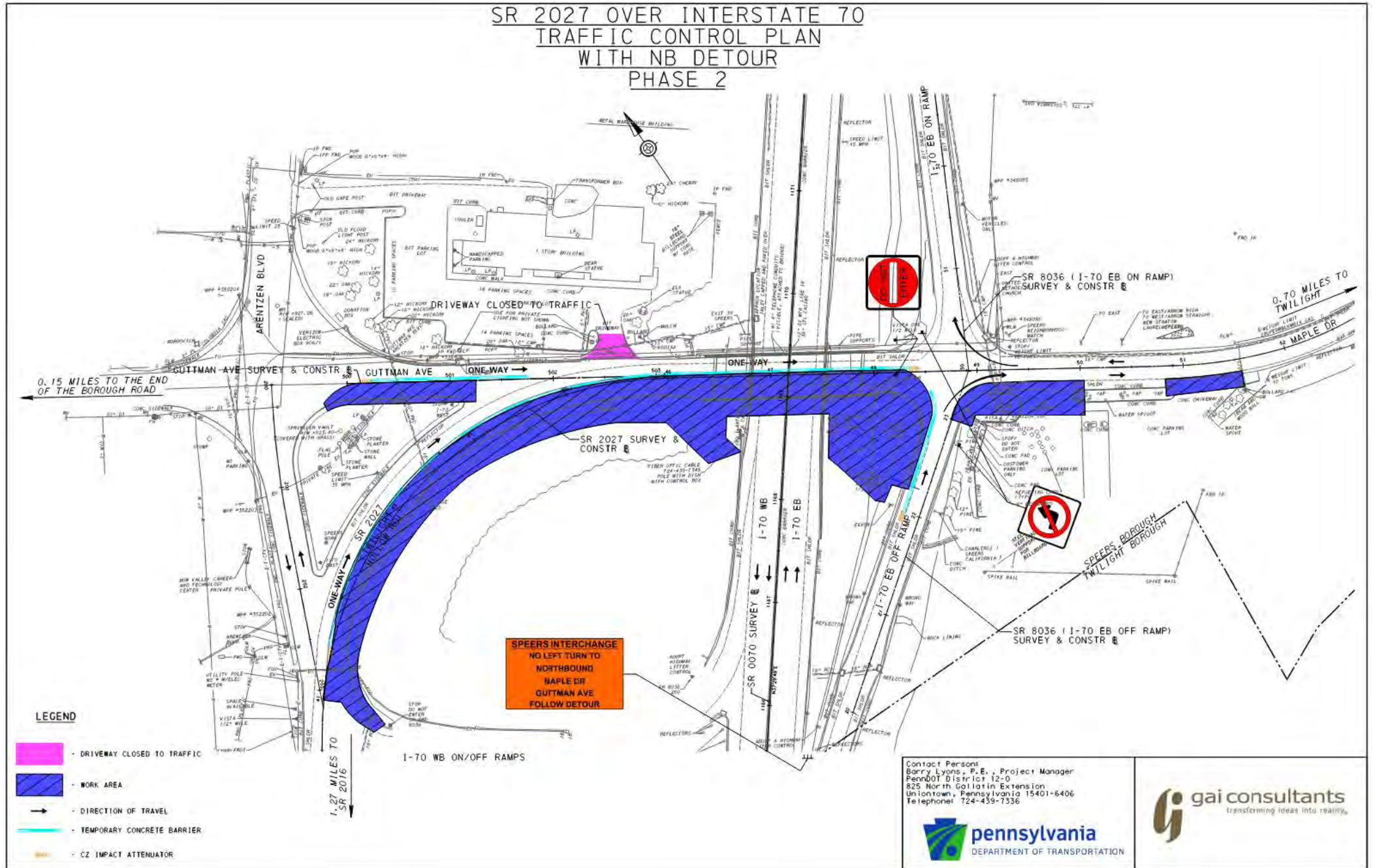
PROPOSED PLAN VIEW

(SHEET 1 OF 1)



PROPOSED TRAFFIC CONTROL TO CONSTRUCT PROJECT

TRAFFIC CONTROL PHASE 2 — CONSTRUCT SB LANE AND BRIDGE SR 2027 (Maple Drive) (SHEET 1 OF 6)

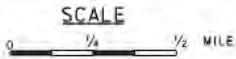
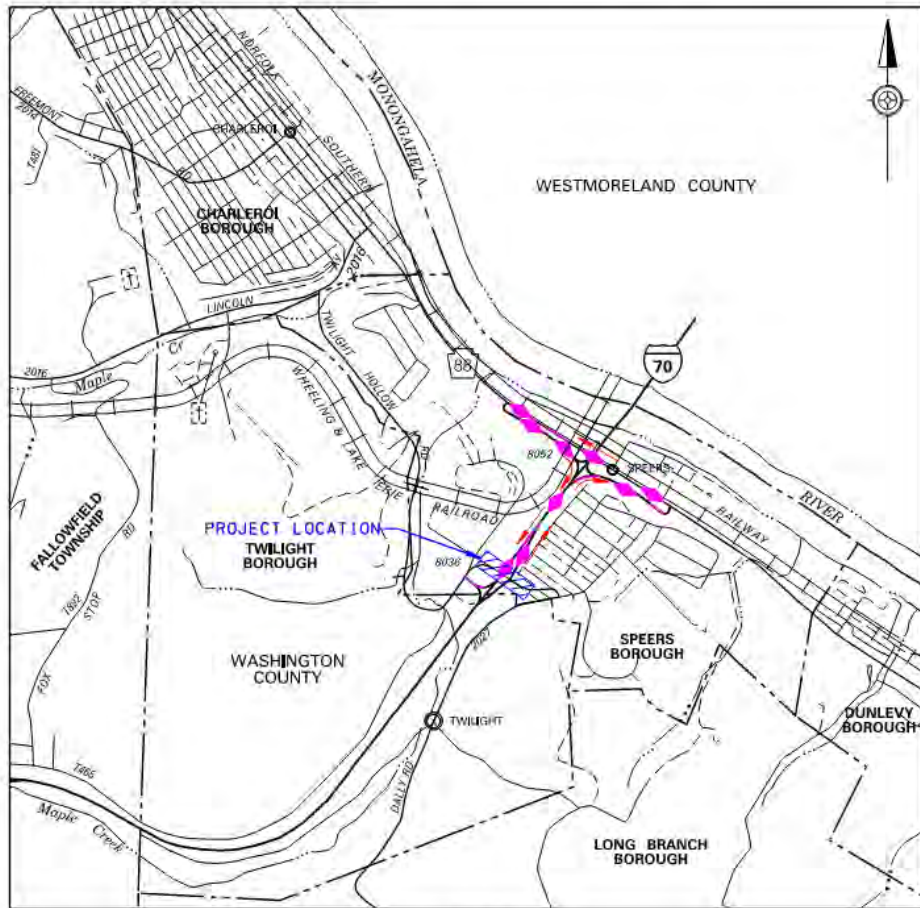


SR 2027 NB DETOUR ROUTE

SR 2027 (Maple Drive)

(SHEET 2 OF 6)

SR 2027 OVER INTERSTATE 70 TRAFFIC CONTROL PLAN SR 2027 BRIDGE CLOSURE TO NORTHBOUND TRAFFIC



LEGEND

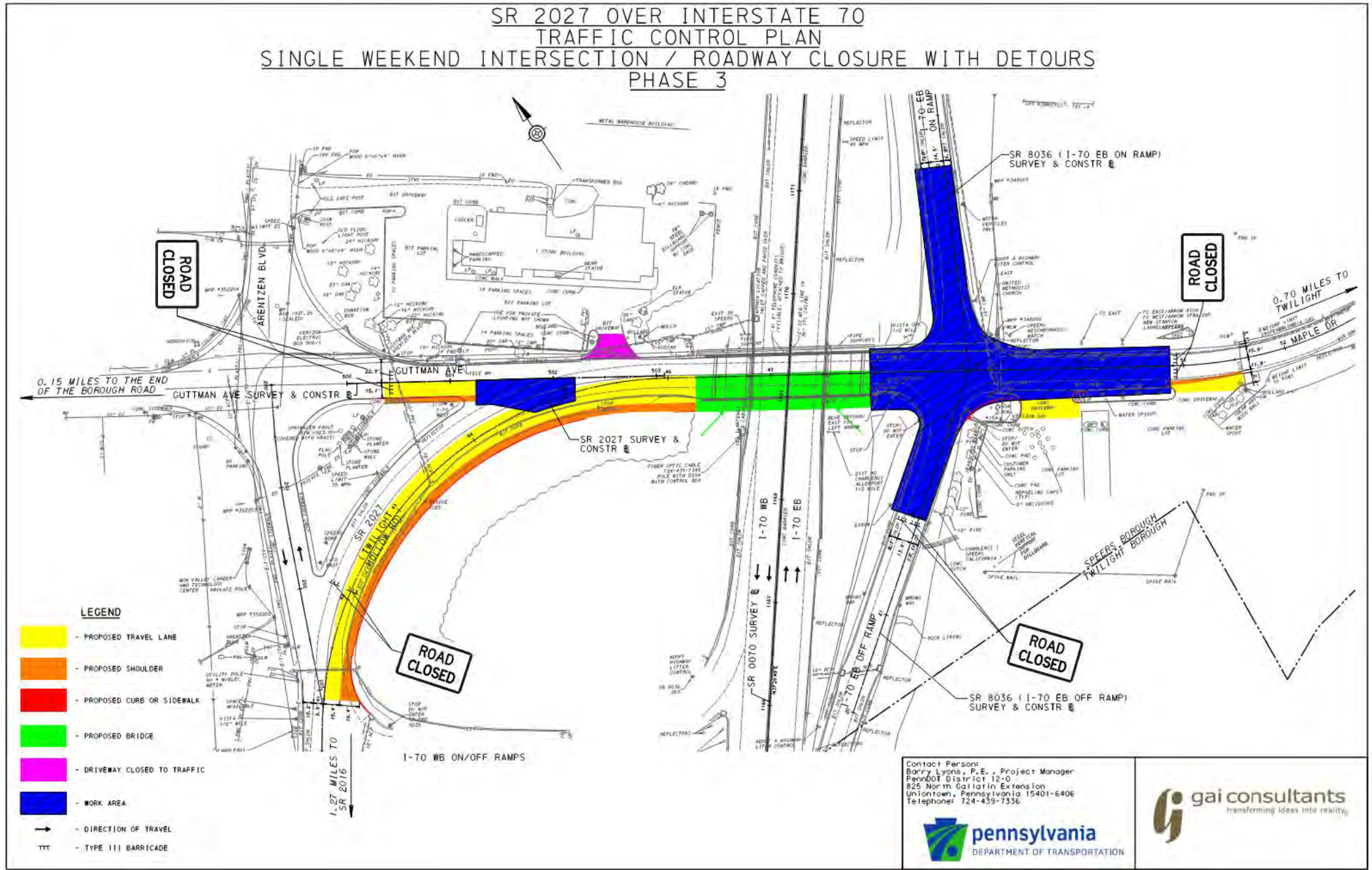
- DETOUR ROUTE (2.20 MILES)
- TOWNSHIP/BOROUGH LINE
- WORK AREA
- DIRECTION OF DETOUR

Contact Person:
Barry Lyons, P.E., Project Manager
PennDOT District 12-0
825 North Gallatin Extension
Uniontown, Pennsylvania 15401-6406
Telephone: 724-439-7336

gai consultants
transforming ideas into reality

TRAFFIC CONTROL – WEEKEND CLOSURE TO REBUILD INTERSECTION SR 2027 (Maple Drive)

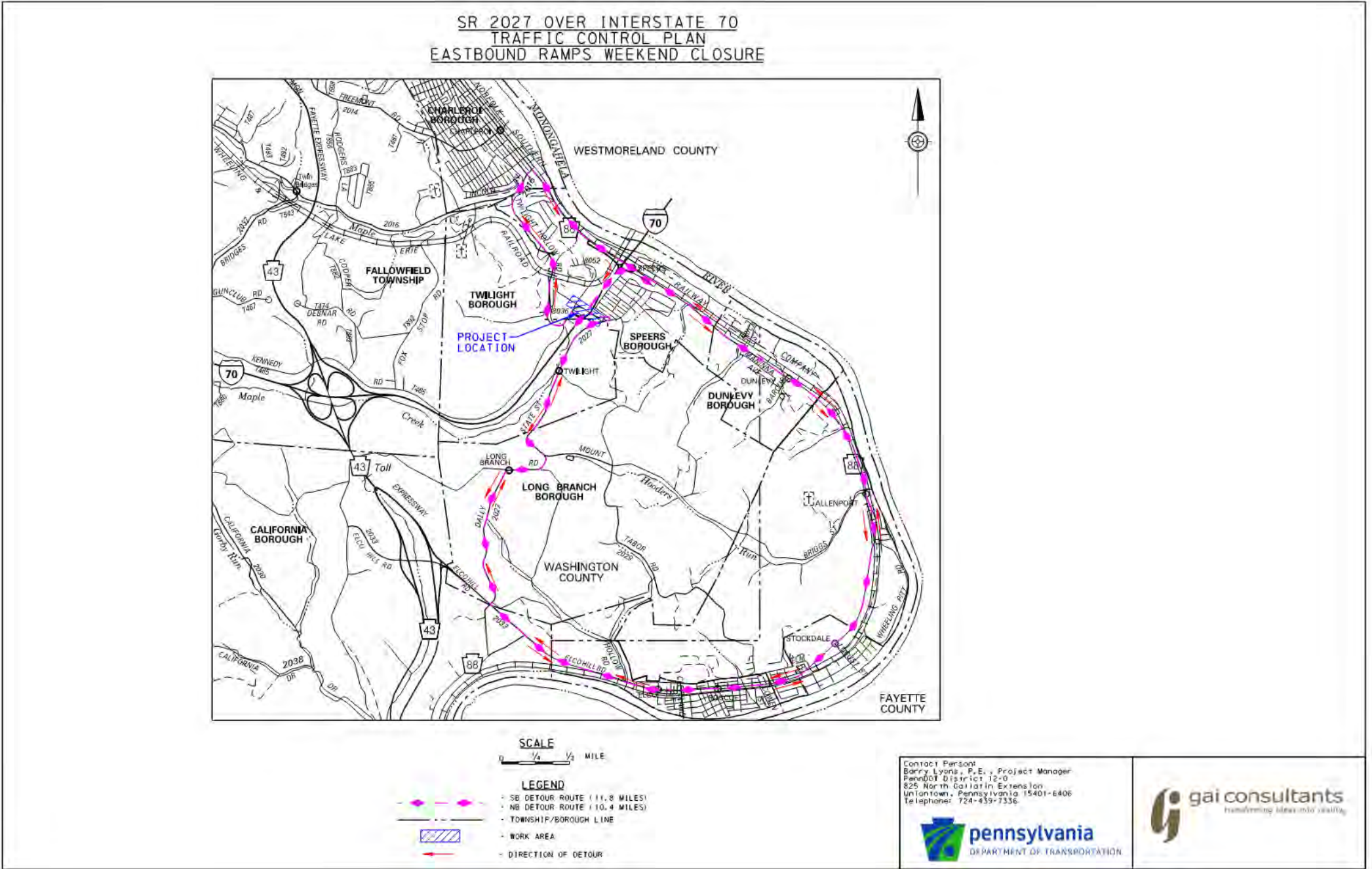
(SHEET 3 OF 6)



TRAFFIC CONTROL -- WEEKEND DETOUR

(SHEET 4 OF 6)

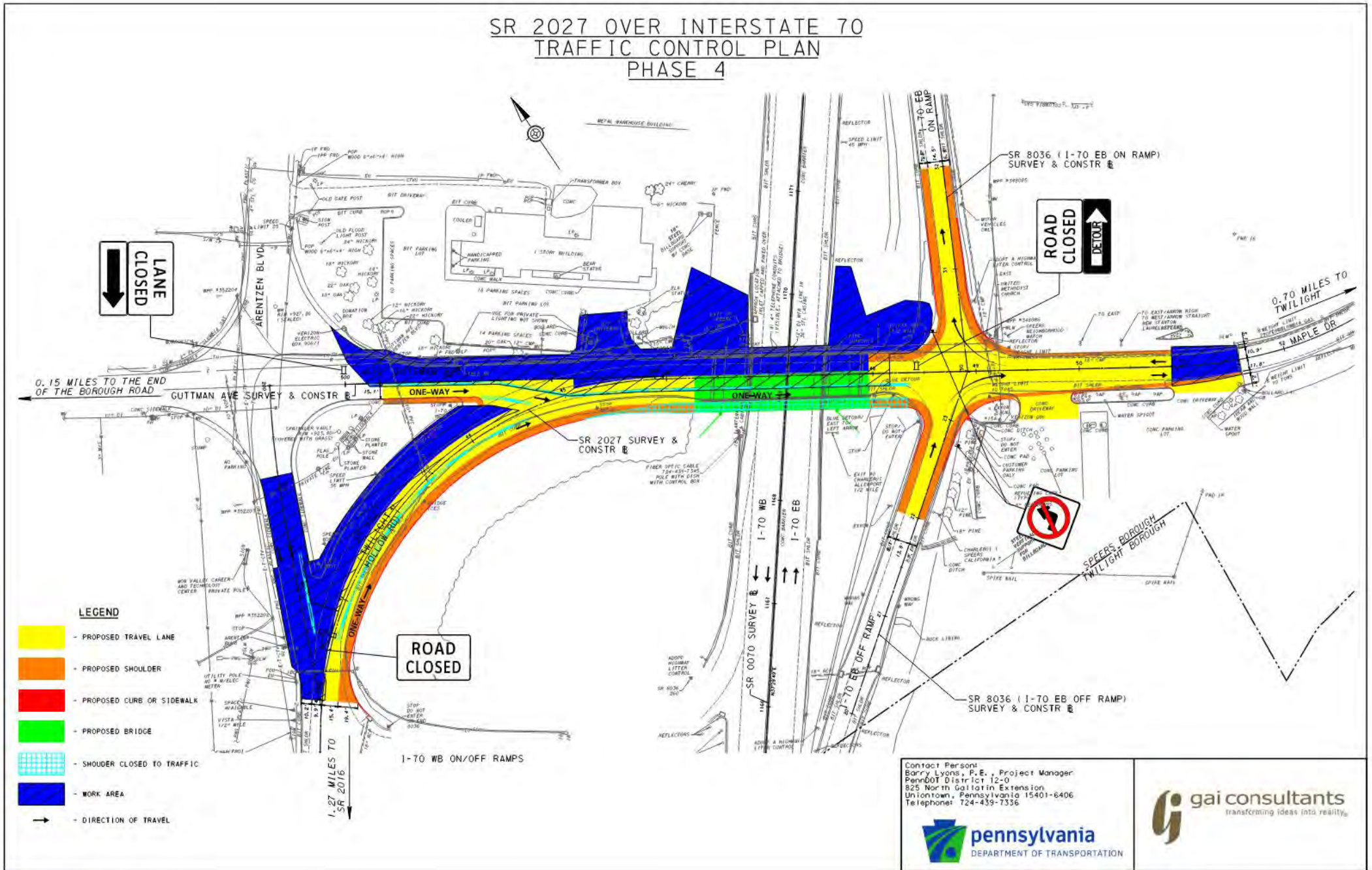
SR 2027 (Maple Drive)



TRAFFIC CONTROL PHASE 4 – CONSTRUCT NB LANE AND BRIDGE SR 2027 (Maple Drive)

(SHEET 5 OF 6)

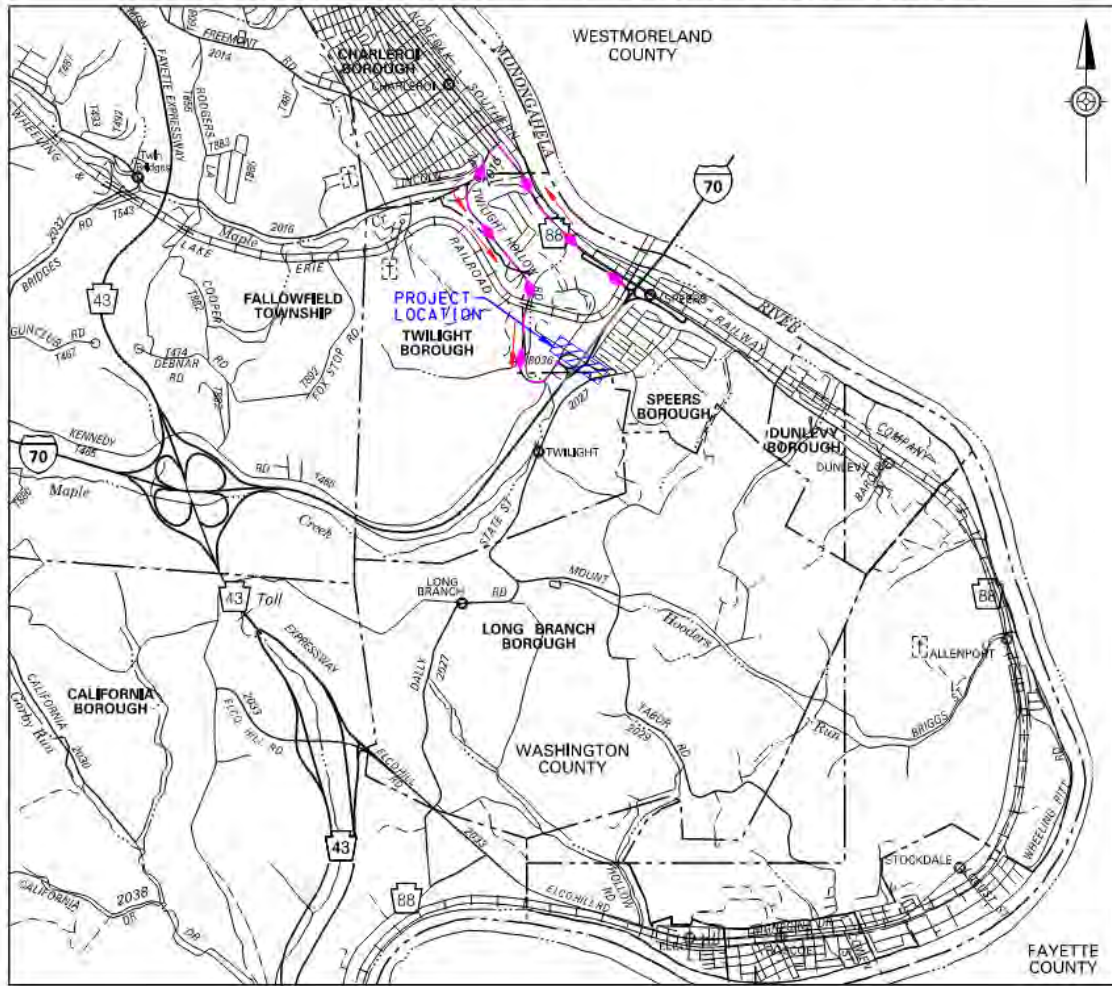
(SHEET 5 OF 6)



TRAFFIC CONTROL - DETOUR I-70 NIGHT CLOSURE

SR 2027 (Maple Drive) (SHEET 6 OF 6)

SR 2027 OVER INTERSTATE 70 TRAFFIC CONTROL PLAN SR 0070 EASTBOUND & WESTBOUND OVERNIGHT CLOSURE








NOTES:

I-70 WB TRAFFIC WILL USE THE SR 88 INTERCHANGE AND THE INDICATED DETOUR.

I-70 EB TRAFFIC WILL UTILIZE THE I-70 EB OFF RAMP AND THE I-70 ON RAMP TO AVOID THE CONSTRUCTION AREA.

SCALE
0 1/4 1/2 MILE

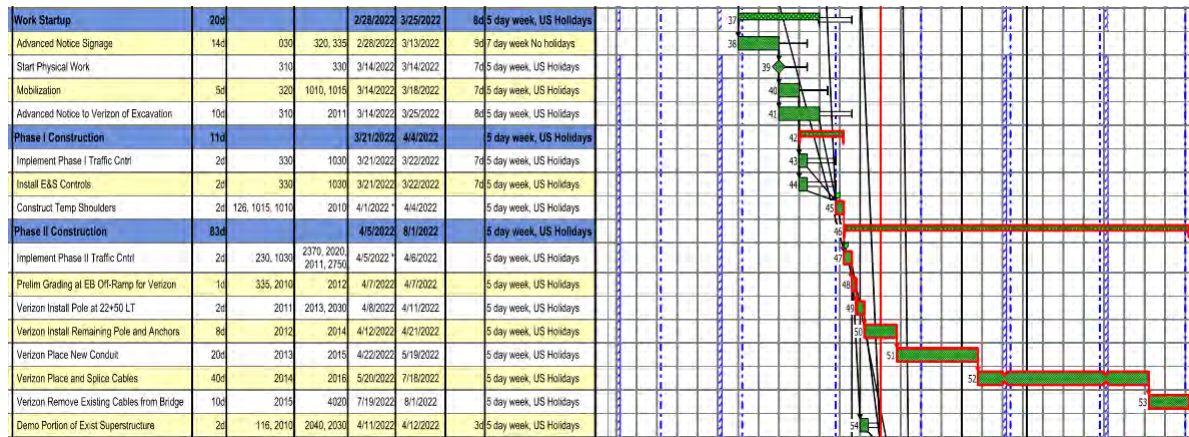
LEGEND

-  - WB DETOUR ROUTE (2.5 MILES)
-  - EB DETOUR ROUTE (0.1 MILES)
-  - TOWNSHIP/BOROUGH LINE
-  - WORK AREA
-  - DIRECTION OF DETOUR

Contact Person:
Barry Lyons, P.E., Project Manager
PennDOT District 12-0
825 North Galatin Extension
Uniontown, Pennsylvania 15401-6406
Telephone: 724-439-7336



TENTATIVE PROJECT SCHEDULE



Key Milestones:

- ❖ Bid Opening January 13, 2022 (Beech Construction Low Bidder).
- ❖ Start Work – Mid-March 2022.
- ❖ Implement Phase 2 (i.e., NB SR 2027 Detour) – Early April.
- ❖ Implement Phase 3 Weekend Closure of both Directions of SR 2027 and the Eastbound I-70 On/Off Ramps – Late July.
- ❖ Implement Phase 4 (i.e., NB SR 2027 Detour again) – Late July.
- ❖ Open to Traffic – Late October.

QUESTIONS?

Contact the PennDOT Project Manager with any questions/concerns regarding the SR 2027 D10 Bridge Replacement Project.

PennDOT Project Manager:

- ❖ Barry V. Lyons, P.E.
- ❖ Phone: 724-439-7336
- ❖ Email: blyons@pa.gov

