



S.R. 0136 (BEAU ST)  
INTERCHANGE  
(EXIT 20)

NOISE BARRIER

NOISE BARRIER

S.R. 1014 LAKEVIEW DR

T-919 CLARE DRIVE

T-502 HILL TOP ACRES RD



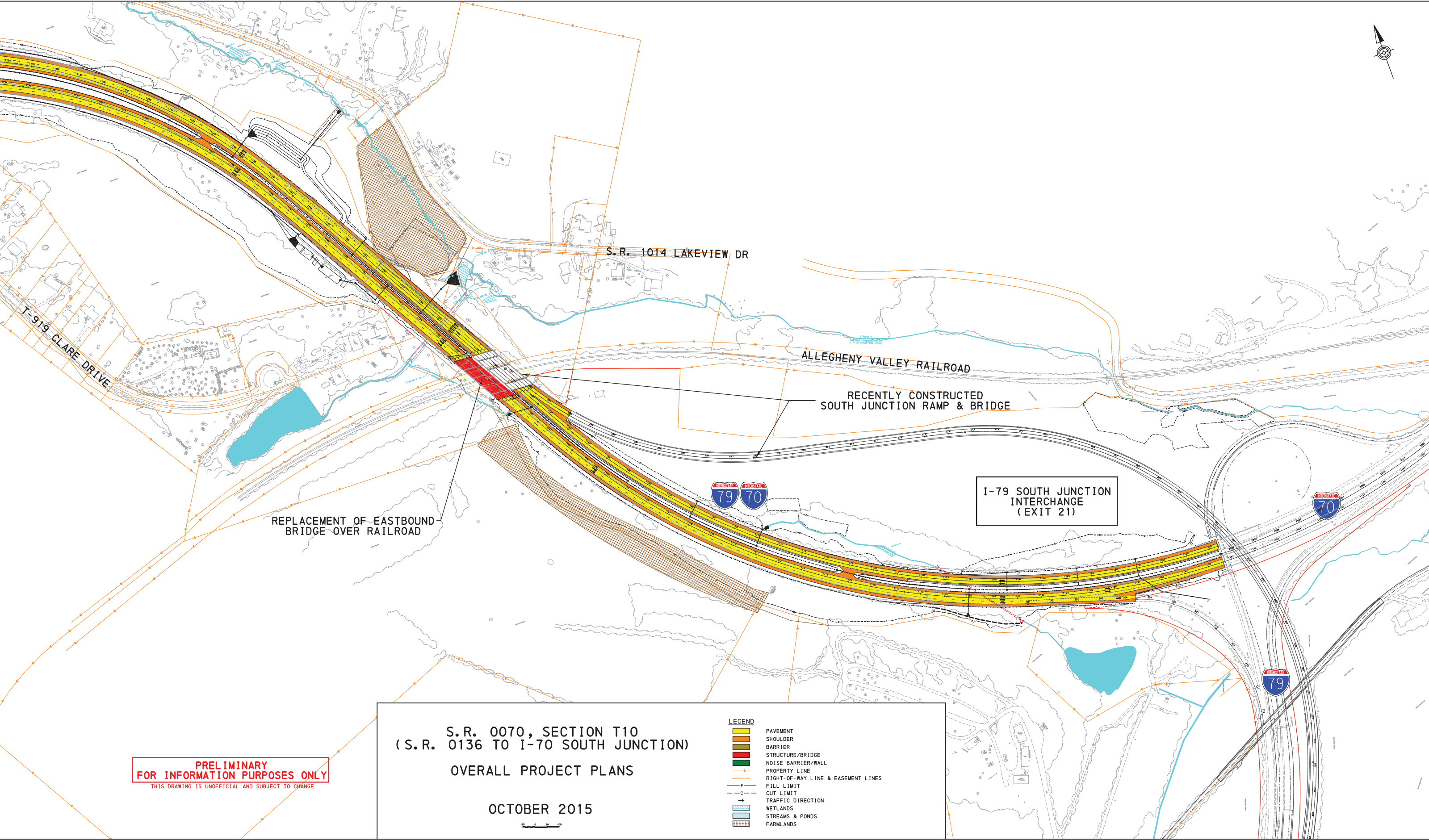
**PRELIMINARY  
FOR INFORMATION PURPOSES ONLY**  
THIS DRAWING IS UNOFFICIAL AND SUBJECT TO CHANGE

S.R. 0070, SECTION T10  
(S.R. 0136 TO I-70 SOUTH JUNCTION)  
OVERALL PROJECT PLANS

OCTOBER 2015

- LEGEND**
- PAVEMENT
  - SHOULDER
  - BARRIER
  - STRUCTURE/BRIDGE
  - NOISE BARRIER/WALL
  - PROPERTY LINE
  - RIGHT-OF-WAY LINE & EASEMENT LINES
  - FILL LIMIT
  - CUT LIMIT
  - TRAFFIC DIRECTION
  - WETLANDS
  - STREAMS & PONDS
  - FARMLANDS





**PRELIMINARY  
FOR INFORMATION PURPOSES ONLY**  
THIS DRAWING IS UNOFFICIAL AND SUBJECT TO CHANGE

**S.R. 0070, SECTION T10  
(S.R. 0136 TO I-70 SOUTH JUNCTION)**

**OVERALL PROJECT PLANS**

**OCTOBER 2015**

LEGEND	
	PAVEMENT
	SHOULDER
	BARRIER
	STRUCTURE/BRIDGE
	NOISE BARRIER/WALL
	PROPERTY LINE
	RIGHT-OF-WAY LINE & EASEMENT LINES
	FILL LIMIT
	CUT LIMIT
	TRAFFIC DIRECTION
	WETLANDS
	STREAMS & PONDS
	FARMLANDS



**SR 0070 SECTION W31  
SOUTH STRABANE TOWNSHIP  
WASHINGTON COUNTY**





**Gibson-Thomas**  
ENGINEERING



**Gibson-Thomas**  
ENGINEERING



**SR 0070 SECTION W31  
SOUTH STRABANE TOWNSHIP  
WASHINGTON COUNTY**

